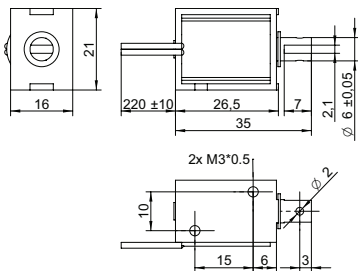
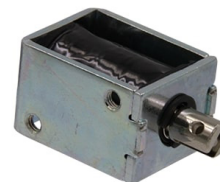


## DRAWING (mm)



## PHOTO



## MODEL NO. DESIGNATION

F0626L - VOLTAGE

Example: F0626L-06V

## ACCESSORIES

● C = customizations are offered on demand even for smaller quantities. Typical customizations are indicated with a green dot at column end. Please contact us for any customization request.

## SOLENOID DATA

	%	100	50	25	10
Duty cycle		100	50	25	10
Power	W	2.1	4.2	8.4	21
Max. time in energized state	s	∞	55	19	3

## PERFORMANCE DATA F0626L-06V

	%	100	50	25	10
Duty cycle		100	50	25	10
Individual voltages	V	6	8.5	12	19
Resistance	Ω	17			

## PERFORMANCE DATA F0626L-12V

	%	100	50	25	10
Duty cycle		100	50	25	10
Individual voltages	V	12	17	24	38
Resistance	Ω	69			

## PERFORMANCE DATA F0626L-24V

	%	100	50	25	10
Duty cycle		100	50	25	10
Individual voltages	V	24	34	48	76
Resistance	Ω	275			

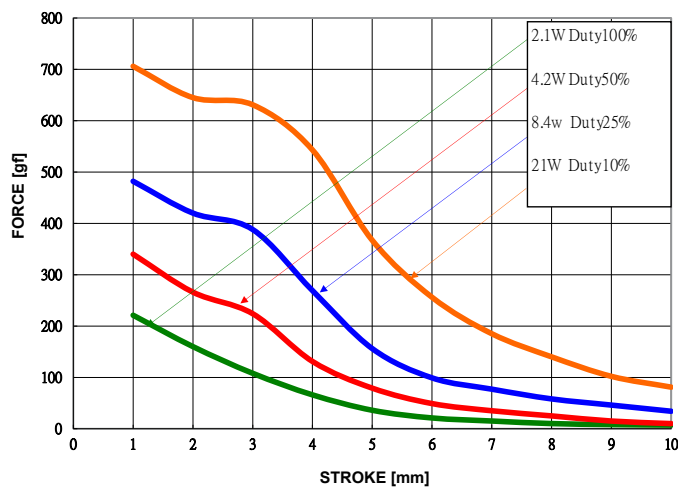
## PERFORMANCE DATA F0626L-48V

	%	100	50	25	10											
Duty cycle		100	50	25 </tr <tr> <td>Individual voltages</td> <td>V</td> <td>48</td> <td>68</td> <td>96</td> <td>152</td> </tr> <tr> <td>Resistance</td> <td>Ω</td> <td colspan="4">1095</td> </tr>	Individual voltages	V	48	68	96	152	Resistance	Ω	1095			
Individual voltages	V	48	68	96	152											
Resistance	Ω	1095														

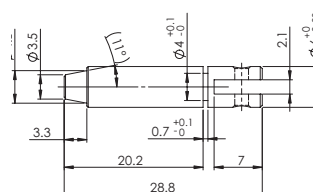
## SOLENOID FEATURES AND STANDARD DATA

Type	Pull type DC solenoid		●
Nominal voltage range <sup>1</sup>	V	6 to 48	●
Loading force <sup>2</sup>	N	0.29	
Cable	Flying wires		●
Cable length	mm	230	
Service life	At least 500000 single strokes		
Return spring	Yes		
Plunger material	Carbon steel 12L14		
IP rating	IP00		
Insulation class	B		
Weight	g	43	
Operating temperature	°C	-5 to 40	
Manufacturing standard	ISO9001:2008   ISO/TS 16949:2002		
CE label   UL label	No   No		

## PERFORMANCE GRAPH



## PLUNGER PROFILE



## NOTES

- Nominal voltages, 100 % duty cycle.
- At 1 mm compression.